



Section : 16. 3D and Point Cloud

Module : 16.1. Time Series

Animating time series data

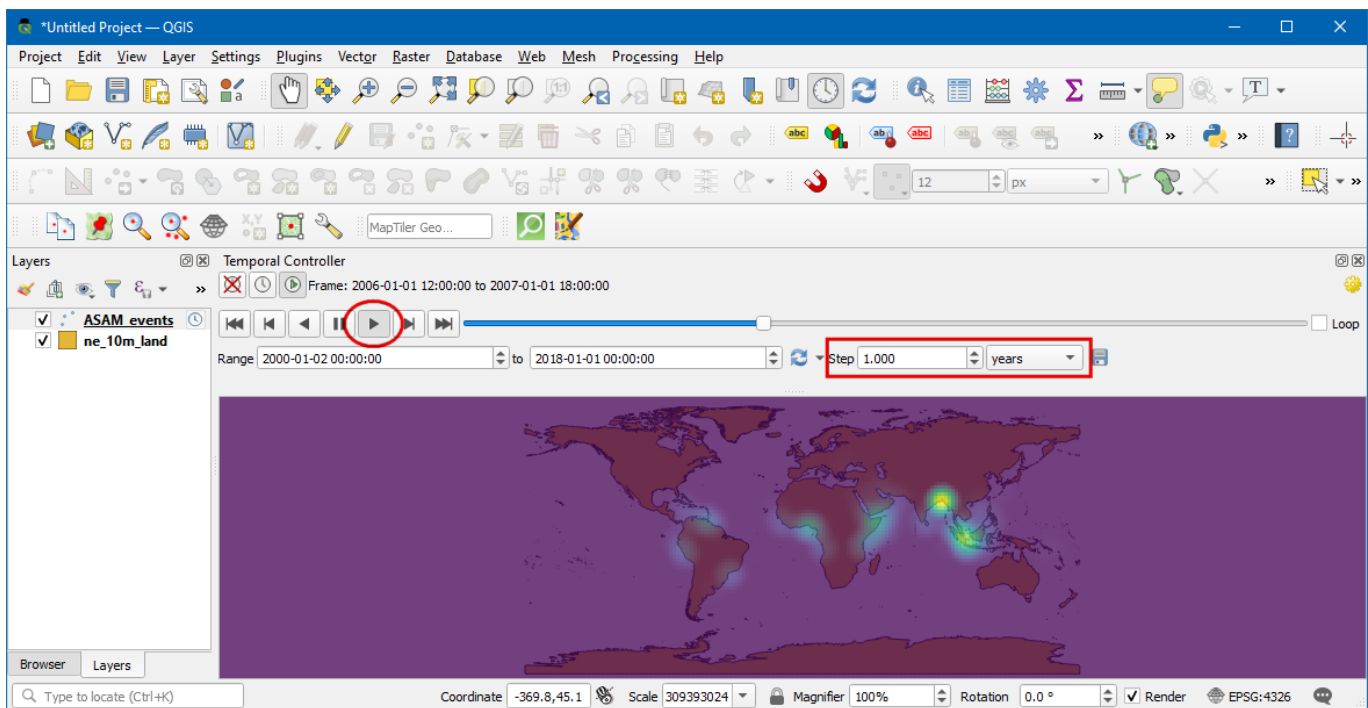
"In this module we give you walk through of visualising time series data in QGIS"

Time series is a sequence of values collected overtime on a particular variable. A time series can consist of the values of a variable observed at discrete times, averaged over a given time interval, or recorded continuously with time.

Time series can be analyzed to

- detect a trend due to another random variable
- develop and calibrate a model,
- predict future characteristics of a variable.

The exercise can be fetched [here](#)



Module video tutorial:

- <https://youtu.be/vgDg5cRwPRw>

Further reading:

- Temporal controller: <https://anitagraser.com/2020/05/10/timemanager-is-dead-long-live-the-temporal-controller/>
- QGIS temporal: <https://www.gispo.fi/en/open-software/geogiffery-in-2020-with-qgis-temporal-controller/>
- QGIS Changelog: <https://qgis.org/en/site/forusers/visualchangelog314/#temporal>